

SHOP  
ENTRANCE



OFFICE  
HARLEY-  
DAVIDSON  
CO.



# 2013 Harley-Davidson Motorcycles New Product Technical Forum

# Powertrain

**A change has been made to how transmission oil level is checked.**

**Currently it is checked on the side stand with the dipstick resting on the threads.**

**It is still checked on the side stand.**

**The change is to screw the dipstick in until the o-ring touches the case.**

**Full clutch adjustment added to PDI for all BT**

# Tools

## Midtronics GRX-3110 HD Battery Diagnostic Station

Combines Diagnostics and Fast  
Charging

Utilizes Conductance and Load  
Testing to Determine Battery Health

Battery Clamps Designed for H-D  
Batteries

Supports 27 Languages

USB Port for Software Updates

5 Expansion Slots Allow for Future  
Capabilities

Optional Cart Available



# MY2013 Offerings – V-Rod®



VRSCDX – Night Rod® Special



VRSCDF – V-Rod Muscle®

# MY2013 Offerings - Sportster



XL883N – Iron 883™



XL883L – SuperLow®



XL883R (International Only)



XL1200C – 1200 Custom (w/NGP)



XL1200V – Seventy-Two™ 72



XL1200N - Nightster



XL1200X – Forty-Eight®



XR1200X

# MY2013 Offerings - Dyna®

**NEW!**



FXDB Street Bob® + NGP



FXDC Super Glide® Custom



FXDL Dyna Low Rider® (JPN Only)



FXDF Fat Bob®



FXDWG Wide Glide®



FLD – Switchback

# FXDB - Featured Content



# FXDBP – MY '13 Dyna®



## Reasons to Buy

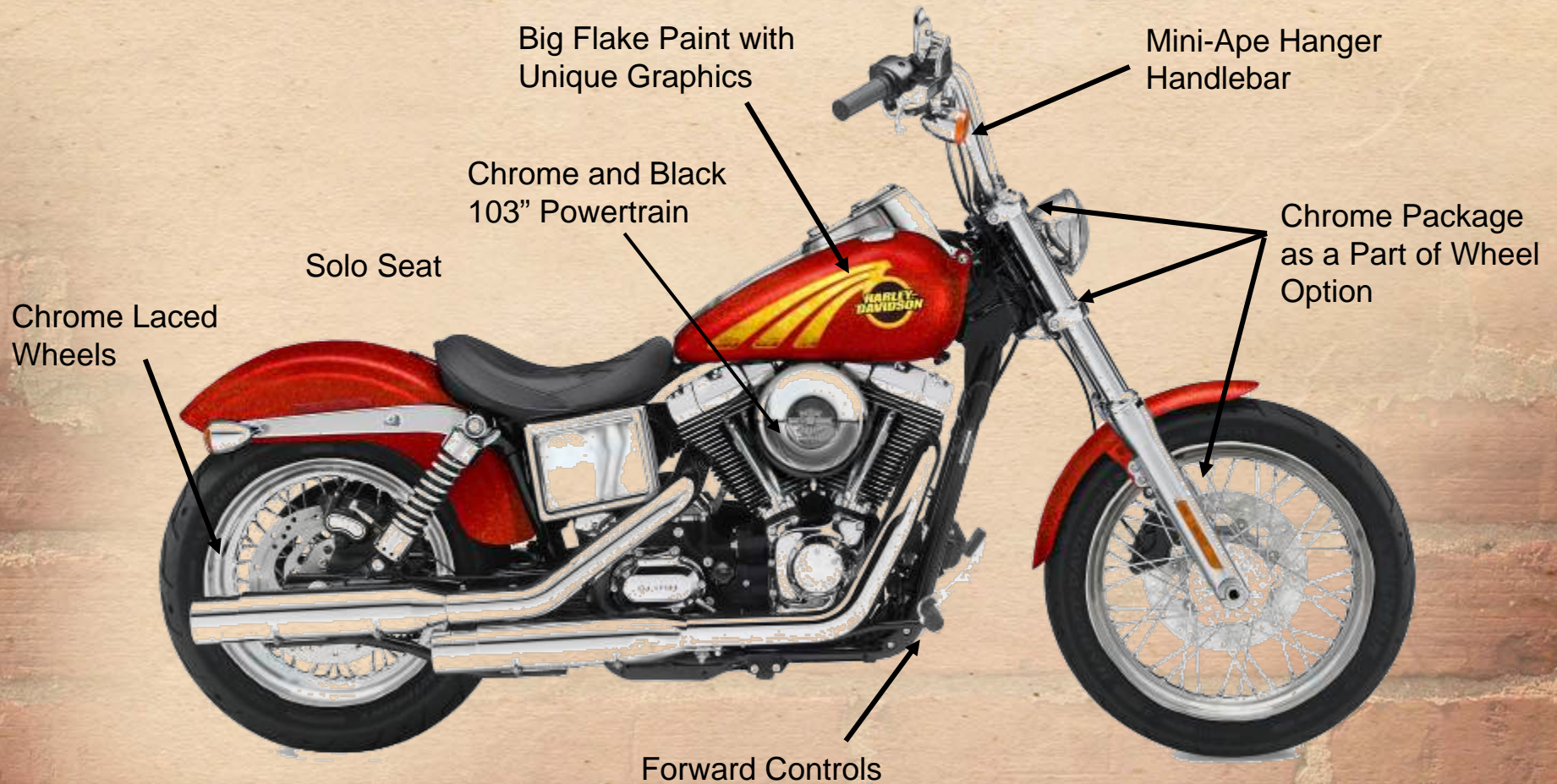
Expansion of the NGP program to reach more customers  
Customer selected ergonomic options – seat and handlebars  
Unique styling options – wheels, unique paint and finishes



# Options Pricing Summary

Painted Parts	Wheel Assemblies	Engines	Control Position	Handlebar Kits	Seat Kits	ABS/Security
Refer to MY2011 Paint Matrix for Detail Standard color and 2-tone pricing	Stock Black Laced	Black 103	Stock Mid	Stock-Ape Hanger	Stock	Stock
	\$0	\$350	\$0	\$0	\$0	\$0
	Chrome Laced w/ blackwall	Black w/ Chrome 103	Forward Controls	Drag Bar	2-Up	ABS w Security
	\$600	\$700	\$180	\$180	\$250	\$1,195
	Colored Laced w/ blackwall			Ergo / Beach Bar		
Custom 4 <b>\$695</b> HCC Single Tone	Cast Wheel					
Custom 1 <b>\$695</b> Classic 2-tone	\$460					
Custom 2 <b>\$695</b> Exotic (Pro Street)						
Custom 3 <b>\$1000</b> Graphic HCC						
Custom 4 <b>\$695</b> Two-Tone Bobber						

# Hard Candy Custom



# High End Bobber



# Classic



# Dominator



# MY2013 Offerings - Softail®



FLSTFB Fat Boy® Lo



FLSTF Fat Boy®



FLSTN Softail® Deluxe



FXS – Blackline®



FLS – Softail® Slim™



FLSTC Heritage Softail® Classic



FXST Softail® Standard  
(Australia Only)

# MY2013 Offerings - Touring



FLHTK Ultra Limited



FLHTCU Ultra



FLHTC Classic



FLTRU Road Glide® Ultra



FLHX Street Glide®



FLTRX Road Glide® Custom



FLHRC Road King® Classic



FLHR Road King®

# MY2013 Offerings - Trike



FLHTCUTG Tri Glide® Ultra Classic®



# MY2013 Offerings - Trike

Reverse Motor Running Change – Corrosion Improvements

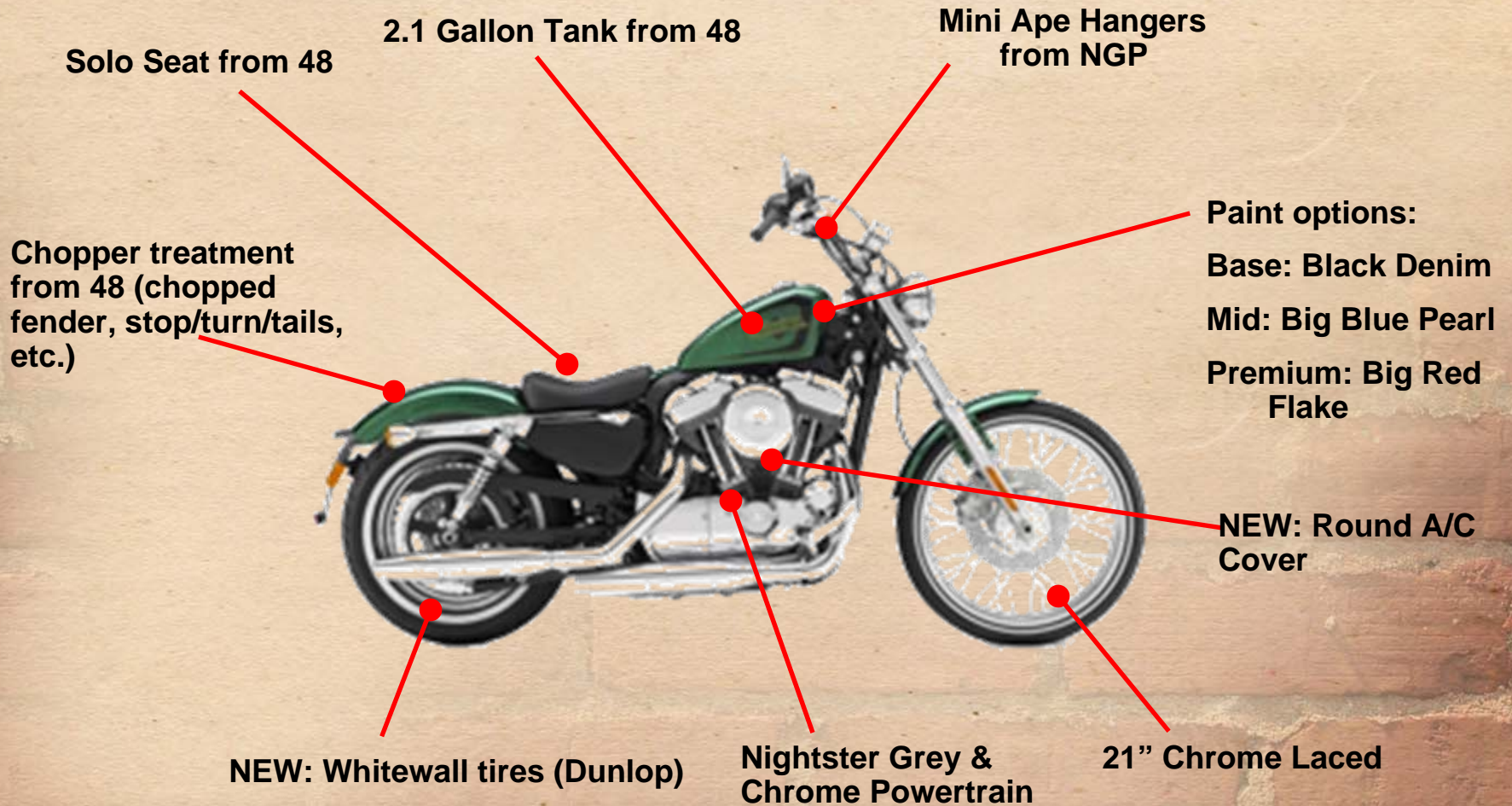


Added drain hole and drain valve to allow water to escape



Brushes rotated away from 6 o'clock position

# Seventy-Two™ - Features



# FLS Softail® Slim - Content



# 110th Anniversary - MY13

- Very limited volume; approximately 2-3 per model per dealer worldwide
- Content similar to 105<sup>th</sup> –
  - 7 OE models with 110<sup>th</sup> 2-tone Anniversary Vintage Bronze Pearl with Anniversary Vintage Black
  - 3 CVO models with special anniversary graphic package
  - Serialization
  - 110<sup>th</sup> specific identification on tank, air cleaner, derby cover, etc.
  - New seat, and wheels with special finish



# 110th Anniversary – Model selections

## 110<sup>th</sup> Anniversary Models (7):

- Ultra Limited
- Road King<sup>®</sup>
- Heritage Classic
- Fat Boy<sup>®</sup> Lo
- Super Glide<sup>®</sup> Custom
- 1200 Custom
- Tri Glide<sup>™</sup>

Tri Glide<sup>™</sup>



Ultra Limited



Road King<sup>®</sup>



Heritage  
Classic



Fat Boy<sup>®</sup>  
Lo



Super  
Glide<sup>®</sup>  
Custom



1200 Custom



# Content Overview – Ultra Limited

## Two-tone paint

- Anniversary Vintage Bronze with Anniversary Vintage Black
- Special Pearl Coat



# Tank Medallions



- Tank Badging will be forged solid bronze
- Black nickel chrome plated and buffed
- Badging will be sealed to prevent surface oxidation
- Cloisonné Bar & Shield insert

# Fat Boy<sup>®</sup> Lo





# Heritage Softail® Classic



# Road King®



# Tri Glide® Ultra Classic®



# 2013MY CVO™



FLTRXSE2 Road Glide®



FLHTCUSE8 Ultra Classic®



FLHRSE5 Road King®



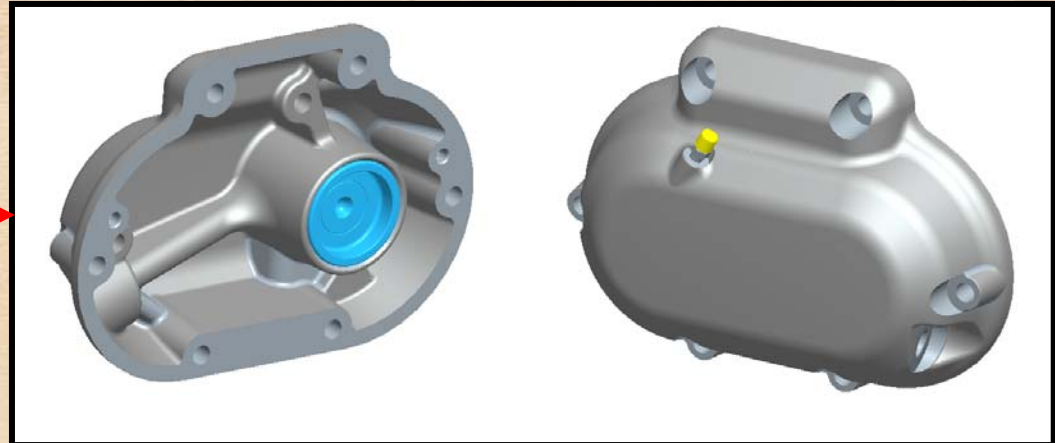
FXSBSE Breakout™

# CVO Product Updates

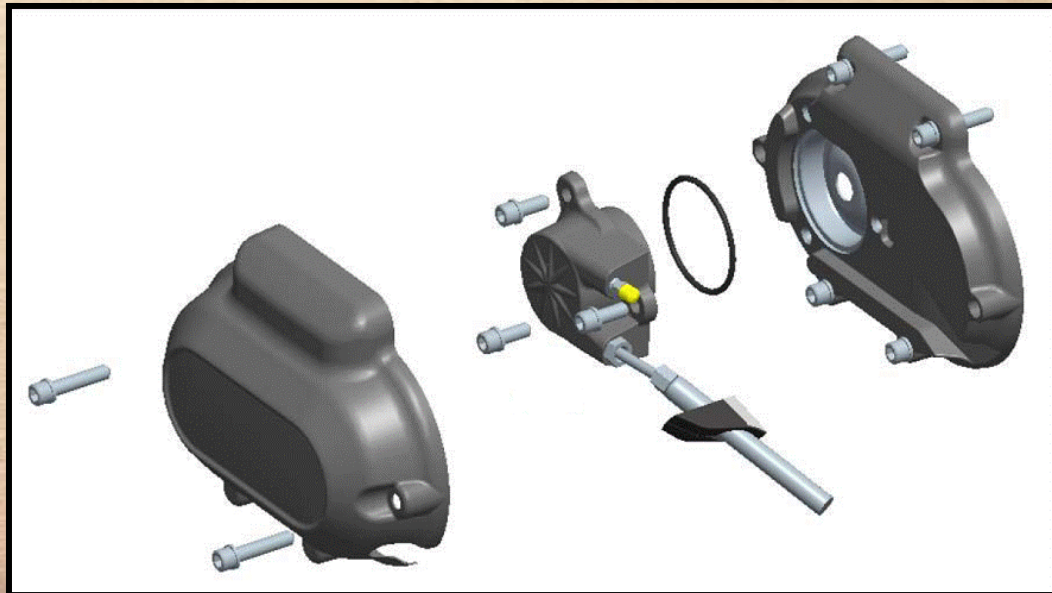
- All vehicles will have the A&S hydraulic clutch.
  - Clutch lever effort is substantially reduced compared to the OE clutch.
- All CVO engines will now have a full compliment cam bearing.
- It is recommended that the SE High Performance inner cam bearing be used on all non-OE cam shafts for all twin cam engines.
  - 24017-10 for 2000 to 2006 Big Twins except 2006 Dyna®.
  - 24018-10 for 2006 Dyna® and 2007 and later Big Twins.

# CVO Hydraulic Clutch - Design

Current  
Production  
System



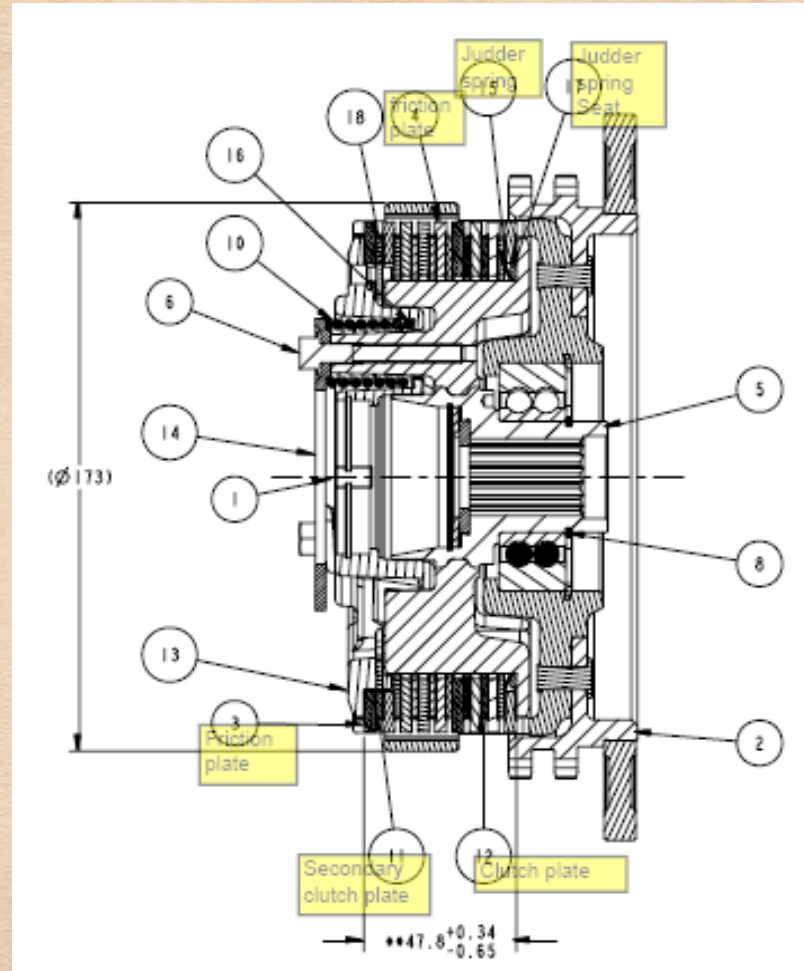
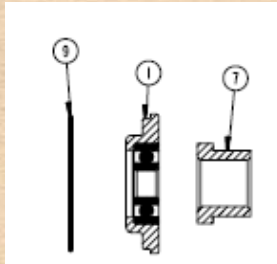
2012MY  
System



# Assist and Slip Clutch (A&S Clutch)

Parts that did not change

- Clutch basket assembly
- Main shaft nut
- Center plate
- Center plate retaining ring



Parts that are new

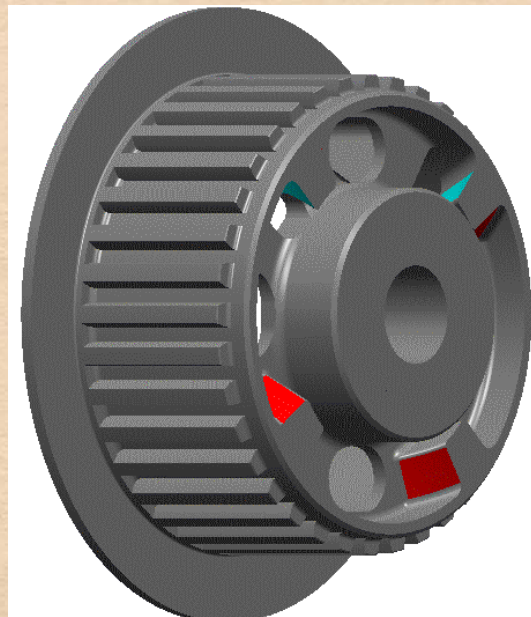
- Judder spring and seat
- Friction plates
- Clutch hub assembly
- Steel plates
- Clutch spring
- Pressure plate

# Assist and Slip Clutch (A&S Clutch)

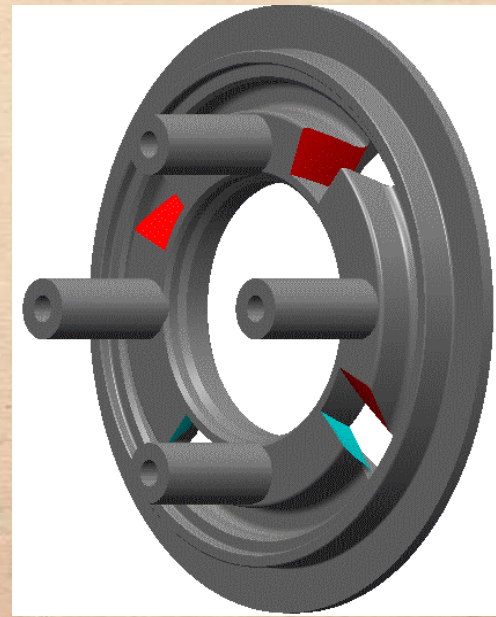
Assist ramps provide additional clamping force onto clutch pack when torque is applied.

Slip side of the ramps try to separate the clutch pack during decelerations or downshifting.

Clutch Center



Pressure Plate





# FLTRXSE2 – Road Glide® Custom

## Premium Paint & Graphics

### Available in 2 Colors:

- Atomic Orange and Galaxy Grey with Edge Graphics
- Roman Gold and Burnt Emerald with Edge Graphics

Custom Solo Seat w/  
detach pillion and  
New Leather Inserts

Saddlebag Speakers  
w/ color matched or  
color coordinated  
grilles

Amp & Ipod  
module in  
Saddlebags

Hydraulic Clutch  
System Updates

Extended Heel Shift  
Lever (LH side)

1.25" FLTR  
Handlebar

Windsplitter w/  
HD graphic

Hidden Antenna

Daymaker™  
LED Headlamp

Slipstream  
Collection



# FLHTCUSE<sup>8</sup> – Ultra Classic<sup>®</sup> Electra Glide<sup>®</sup>

## Premium Paint & Graphics

### Available in 3 Colors:

- Tribal Orange/Dark Slate
- Stardust Silver/Dark Slate
- Typhoon Maroon/Black Diamond



# FLHRSE<sup>5</sup> – Road King<sup>®</sup>

**Premium Paint & Graphics; available in 2 colors**

Burgundy Blaze w/Hot Fusion Graphics

Crushed Sapphire w/ Cold Fusion Graphics

Custom Solo Seat w/ detachable  
pillion and new leather Inserts

**200 watt amp, audio module  
and iPod in LH s/bag**

5 X 7 speakers  
In s/bag lids

New custom console and  
Custom Speedo/tach

**New vented, detachable,  
Dark smoked w/shield**

Profile mirrors

Ergo designed 1 ¼  
Handlebar, w/audio  
controls

Extended  
s/bags with  
LED lighting

Hydraulic Clutch  
System Updates

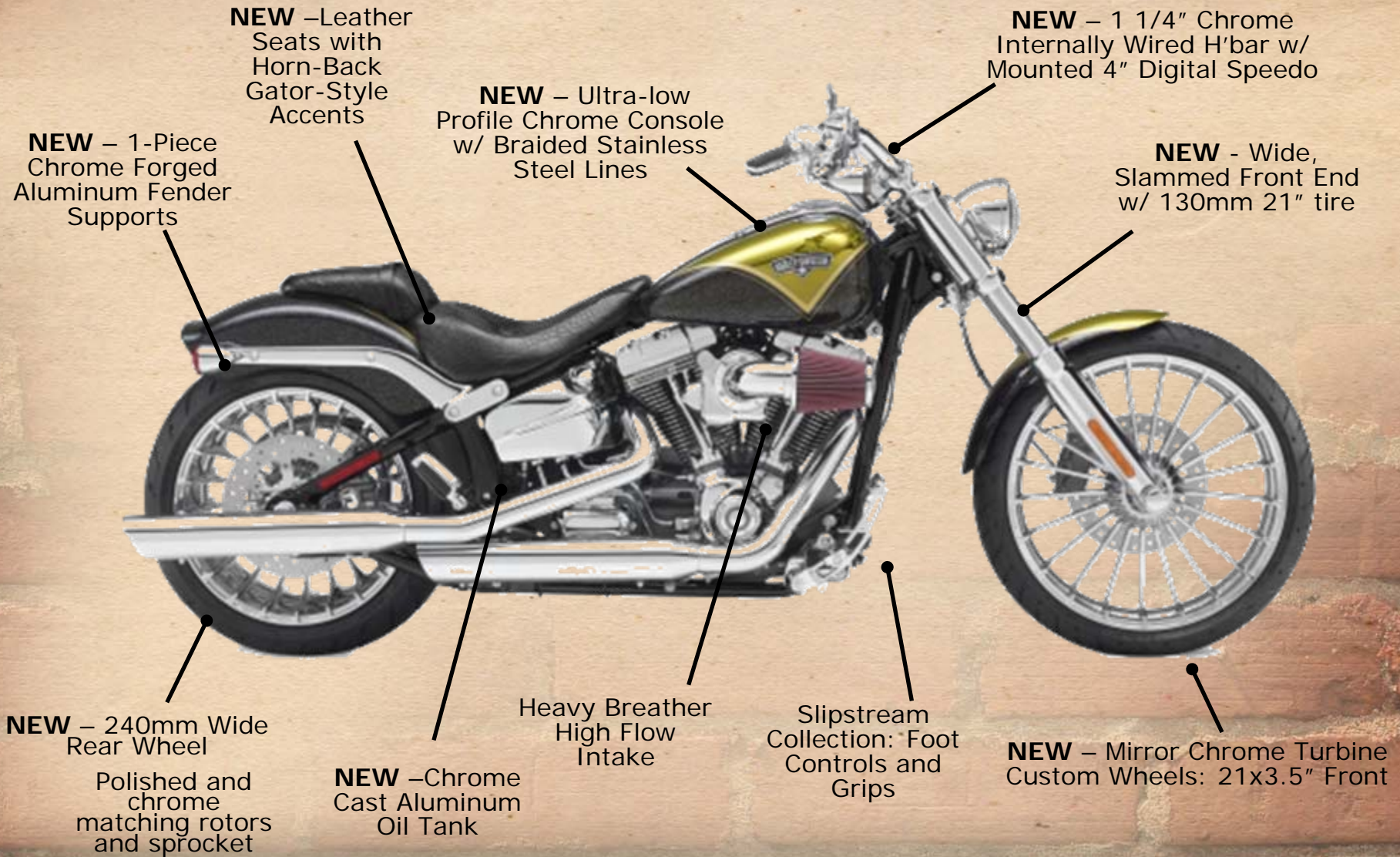
Slipstream collection  
Pegs, boards, grips

5 ¼ 2-way speakers  
In fairing lowers

Mirror chrome  
Agitator wheels



# FXSBSE - Breakout™



# Breakout™ Paint Options

Unique, Custom Polished Metal Fuel Tank & Fenders

Black Diamond and Molten Silver with Crushed Slate Graphics

Hard Candy Gold Dust and Liquid Sun with Gold Leaf Graphics

Crimson Red Sunglo and Scarlet Lace with Hammered Sterling Graphics



# CVO Gold Museum Membership

Each New Vehicle Purchaser (NVP) receives a CVO Gold Collector Coin with Membership. CVO Gold Museum Membership Benefits:

<u>Base Membership Benefits</u>	<u>CVO Gold Museum Extras</u>
<ul style="list-style-type: none"><li>•Museum Membership Card</li><li>•Unlimited Museum Admission</li><li>•Collectible Limited Edition Dog Tag</li><li>•Member-only Website Content</li><li>•Special Privileges to Museum Programs, Events &amp; Exhibits</li><li>•10% Discounts at Motor Bar &amp; Restaurant, Café Racer, The Shop, &amp; Online Art Shop</li><li>•The Backroad Chronicles, a pocket-sized guide to the Museum</li></ul>	<ul style="list-style-type: none"><li>•Unlimited visits for two (2) adults (and kids/grandkids)</li><li>•Bring Up To Four (4) Complimentary Guests Each Visit</li><li>•A second Collectible Limited Edition Dog Tag</li><li>•Certificate for a free Audio Tour at the Museum</li><li>•Exclusive CVO content on the Members-Only Website</li><li>•Special CVO Communications/Stories and Presence at Event</li><li>•The CVO Gold Coin</li></ul>



# CVO - Model Selections

## 110<sup>th</sup> Anniversary Models (3):

- CVO™ Road King®
- CVO™ Road Glide®
- CVO™ Ultra Limited



**Ultra Limited**



**Road Glide®**



**Road King®**

# CVO

## Unique Anniversary Paint Scheme

- Diamond Dust & Obsidian with Palladium graphics

## 110th Seating

- Unique pattern design
- New - Bomber Black leather inserts





# CVO

- **Exclusive Badges**
- Solid Bronze Tank Medallion with Midnight Pearl finish
  - Bar & Shield Cloisonné
- Serialized nameplates
- Midnight Pearl Inserts



# 110<sup>th</sup> Anniversary Edition FLTRXSE<sup>2</sup> CVO™ Road Glide® Custom



# Anniversary Edition FLHTCUSE<sup>8</sup> CVO™ Ultra Classic® Electra Glide®



# Anniversary Edition FLHRSE<sup>5</sup> CVO™ Road King®



# MY'13 International Products



**ONE COMPANY ONE TEAM ONE DIRECTION**

# MY'13 New Global Launches



**XL1200V – 72™(Seventy-Two™)**



**FLS – Softail® Slim**

# 1200 Custom Limited NGP Int'l Configs - XL1200CA



- Candy Orange and Beer Bottle Delux Paint
- Drag Bars
- Forward Controls
- Black Engine
- Chrome Wheels

# 1200 Custom Limited NGP Int'l Configs - XL1200CB



- Denim Black Paint
- Mini Apes
- Mid Controls
- Black Laced Wheels
- Black Engine



# Performance Rear Suspension

Suspension upgrade  
to International base  
**FLHX/ FLTRX**



# Electrical

## Japan Headlight/Fog Lamp Harness Changes

**Softail Models Receive a New Headlamp Assembly for Japan, Australia, and England Markets**

- Fog Lamp Switch Power Spliced to O/W wire Instead of Y Wire.

**Touring Models Continue to Use Jumper Harnesses (Installed at York Assembly Plant)**

## Brazil GPS Security System

**Utilizes GPS for Positioning Information and GSM Cellular for Remote Immobilization**

**Implemented on Softail Models by January 31<sup>st</sup> to Meet Regulatory Requirements**

**All other Models will Receive System in 2014 Model Year**